

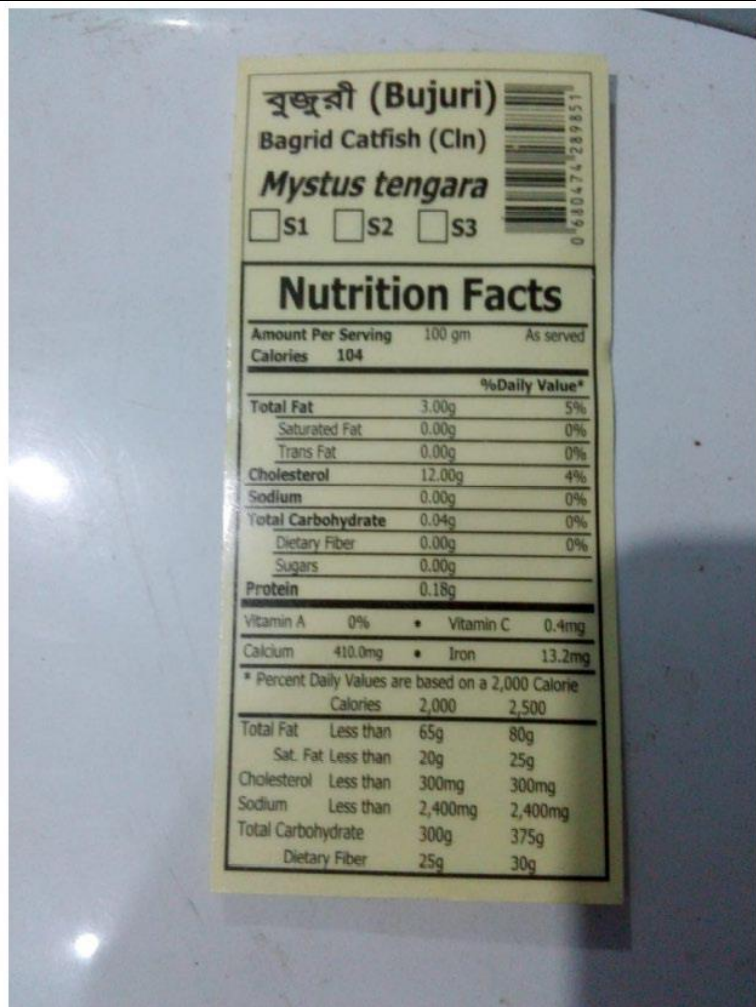


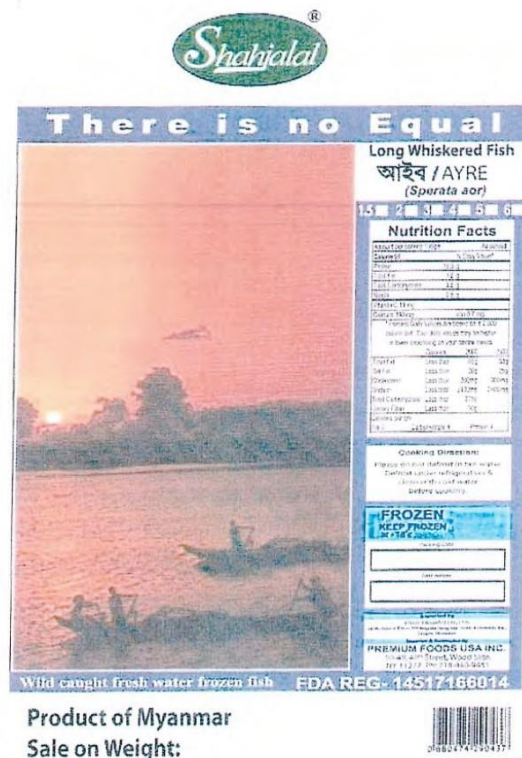
| Product | Label | | | | | | | | | | | | | | | | | | | | | | | | | | | | | | | | | | | | |
|--|--|-----------------|--|--------------------------|----------------|-------------|--|----------------|--|-----------------|--|--------------------------|--|-------------|--|-----------------|--|----------------|-------------|--|--|-----------|-------------------|---------|-------------------|-------------|-----------------------|--------|-------------------------|--------------------|----------------|---------------|---------------|-----------------|--|-------|--------------------------|
| <p>Product added on October 4, 2019</p> <p>There is no Equal (Rita rita)</p> |  <p>There is no Equal</p> <p>রিটা / RITA (Rita rita)</p> <p>2 3 4 5 6 7 8</p> <table border="1"> <thead> <tr> <th colspan="2">Nutrition Facts</th> </tr> <tr> <th>Amount per serving 100gm</th> <th>% Daily Value*</th> </tr> </thead> <tbody> <tr> <td>Calories 91</td> <td></td> </tr> <tr> <td>Protein 15.0 g</td> <td></td> </tr> <tr> <td>Total Fat 1.0 g</td> <td></td> </tr> <tr> <td>Total Carbohydrate 3.5 g</td> <td></td> </tr> <tr> <td>Fiber 0.0 g</td> <td></td> </tr> <tr> <td>Vitamin C 11 mg</td> <td></td> </tr> <tr> <td>Calcium 380 mg</td> <td>Iron 0.7 mg</td> </tr> <tr> <td colspan="2">*Percent Daily Values are based on a diet of other people's secrets.</td> </tr> <tr> <td>Total Fat</td> <td>Less than 65g 80g</td> </tr> <tr> <td>Sat Fat</td> <td>Less than 20g 25g</td> </tr> <tr> <td>Cholesterol</td> <td>Less than 300mg 300mg</td> </tr> <tr> <td>Sodium</td> <td>Less than 2400mg 2400mg</td> </tr> <tr> <td>Total Carbohydrate</td> <td>Less than 375g</td> </tr> <tr> <td>Dietary Fiber</td> <td>Less than 30g</td> </tr> <tr> <td>Calories per gm</td> <td></td> </tr> <tr> <td>Fat 0</td> <td>Carbohydrate 4 Protein 4</td> </tr> </tbody> </table> <p>Cooking Direction: Please do not defrost in hot water. Defrost under refrigeration & clean with cold water before cooking.</p> <p>FROZEN KEEP FROZEN at -18°C</p> <p>Packing Date: <input type="text"/></p> <p>Best before: <input type="text"/></p> <p><small>Imported by:</small> FYFOT TRADING CO., LTD. 138A, Sakura Street, 2nd Floor, Kowloon, Hong Kong, Kowloon, Hong Kong, Kowloon, Hong Kong</p> <p>PREMIUM FOODS USA INC. 50-49, 49th Street, Wood Side, NY 11377 Ph: 718-440-9451</p> <p>Wild caught fresh water frozen fish FDA REG-19772829480</p> <p>Sale on Weight:</p> <p>Product of Myanmar</p> <p>Processed and Packed By: Myeik Zenith Industrial Co., Ltd. DOF Compound, West Gyogone, Insein Tsp, Yangon, Myanmar. Factory Reg. No. YGN/068/MKZ/DOF</p>  <p>0680474290611</p> | Nutrition Facts | | Amount per serving 100gm | % Daily Value* | Calories 91 | | Protein 15.0 g | | Total Fat 1.0 g | | Total Carbohydrate 3.5 g | | Fiber 0.0 g | | Vitamin C 11 mg | | Calcium 380 mg | Iron 0.7 mg | *Percent Daily Values are based on a diet of other people's secrets. | | Total Fat | Less than 65g 80g | Sat Fat | Less than 20g 25g | Cholesterol | Less than 300mg 300mg | Sodium | Less than 2400mg 2400mg | Total Carbohydrate | Less than 375g | Dietary Fiber | Less than 30g | Calories per gm | | Fat 0 | Carbohydrate 4 Protein 4 |
| Nutrition Facts | | | | | | | | | | | | | | | | | | | | | | | | | | | | | | | | | | | | | |
| Amount per serving 100gm | % Daily Value* | | | | | | | | | | | | | | | | | | | | | | | | | | | | | | | | | | | | |
| Calories 91 | | | | | | | | | | | | | | | | | | | | | | | | | | | | | | | | | | | | | |
| Protein 15.0 g | | | | | | | | | | | | | | | | | | | | | | | | | | | | | | | | | | | | | |
| Total Fat 1.0 g | | | | | | | | | | | | | | | | | | | | | | | | | | | | | | | | | | | | | |
| Total Carbohydrate 3.5 g | | | | | | | | | | | | | | | | | | | | | | | | | | | | | | | | | | | | | |
| Fiber 0.0 g | | | | | | | | | | | | | | | | | | | | | | | | | | | | | | | | | | | | | |
| Vitamin C 11 mg | | | | | | | | | | | | | | | | | | | | | | | | | | | | | | | | | | | | | |
| Calcium 380 mg | Iron 0.7 mg | | | | | | | | | | | | | | | | | | | | | | | | | | | | | | | | | | | | |
| *Percent Daily Values are based on a diet of other people's secrets. | | | | | | | | | | | | | | | | | | | | | | | | | | | | | | | | | | | | | |
| Total Fat | Less than 65g 80g | | | | | | | | | | | | | | | | | | | | | | | | | | | | | | | | | | | | |
| Sat Fat | Less than 20g 25g | | | | | | | | | | | | | | | | | | | | | | | | | | | | | | | | | | | | |
| Cholesterol | Less than 300mg 300mg | | | | | | | | | | | | | | | | | | | | | | | | | | | | | | | | | | | | |
| Sodium | Less than 2400mg 2400mg | | | | | | | | | | | | | | | | | | | | | | | | | | | | | | | | | | | | |
| Total Carbohydrate | Less than 375g | | | | | | | | | | | | | | | | | | | | | | | | | | | | | | | | | | | | |
| Dietary Fiber | Less than 30g | | | | | | | | | | | | | | | | | | | | | | | | | | | | | | | | | | | | |
| Calories per gm | | | | | | | | | | | | | | | | | | | | | | | | | | | | | | | | | | | | | |
| Fat 0 | Carbohydrate 4 Protein 4 | | | | | | | | | | | | | | | | | | | | | | | | | | | | | | | | | | | | |

Product added on October 4, 2019

(Bujuri) Bagrid Catfish (Cin)
Mystus tengara

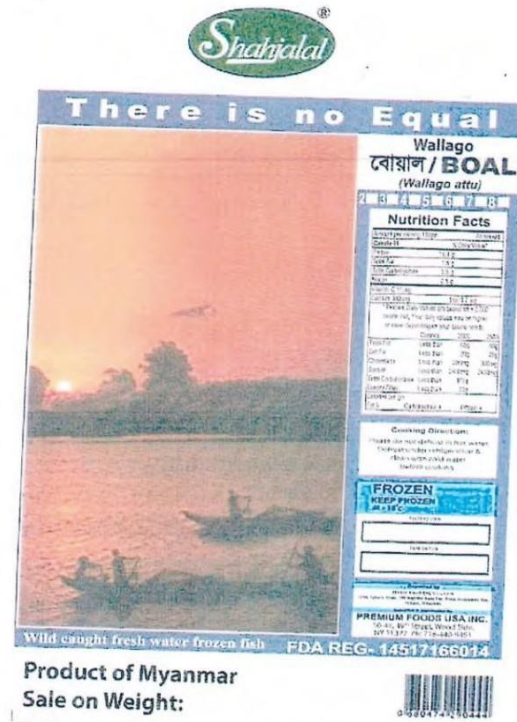


Shahjalal There is no Equal
Long Whiskered Fish / AYRE
(Sperata aor)

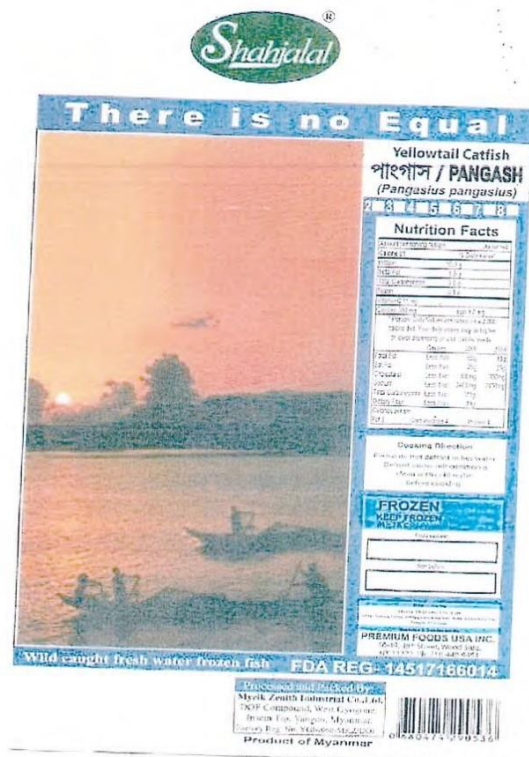


Recall 080-2019

Shahjalal There is no Equal
Wallago/BOAL (Wallago attu)



Shahjalal There is no Equal
Yellowtail Catfish/PANGASH
(Pangasius pangasius)

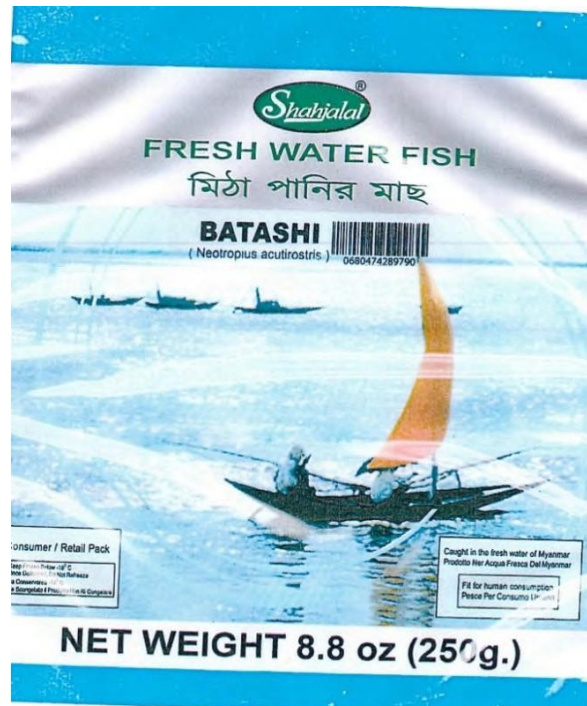


Shahjalal FRESH WATER FISH
BOAL (Wallago attu) (Egg)

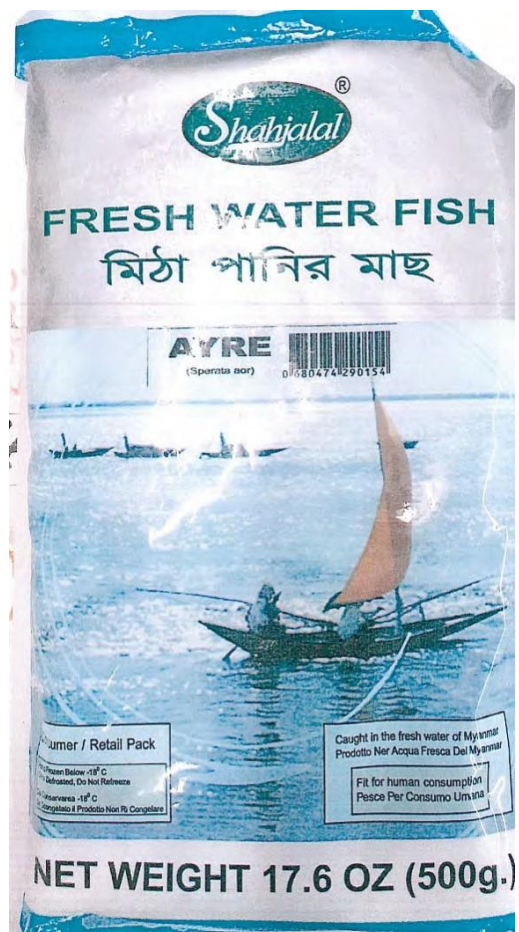


Recall 080-2019

Shahjalal FRESH WATER FISH
BATASHI (neotropius
acutirostris)



Shahjalal FRESH WATER FISH
AYRE (Sperata aor)



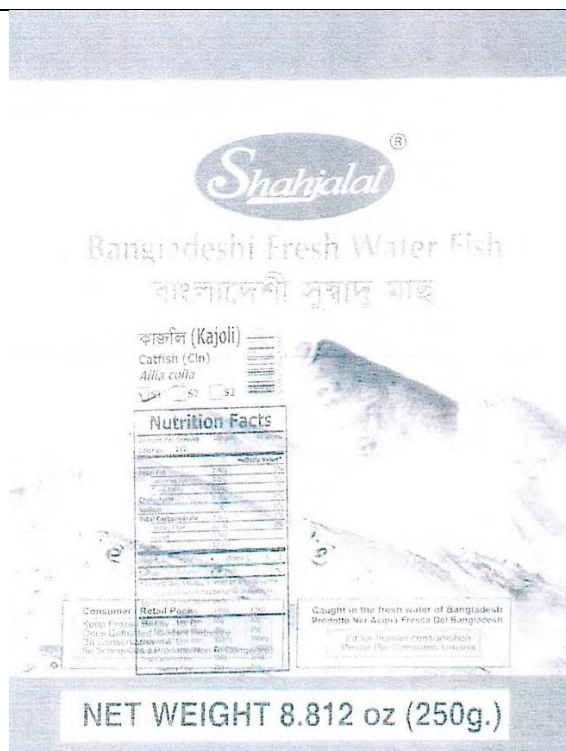
- Shahjalal Bangladeshi Fresh Water Fish (Bacha) Catfish (Wr), Eutropiichthys vacha
- Shahjalal Bangladeshi Fresh Water Fish (Bacha) Catfish (Cln), Eutropiichthys vacha



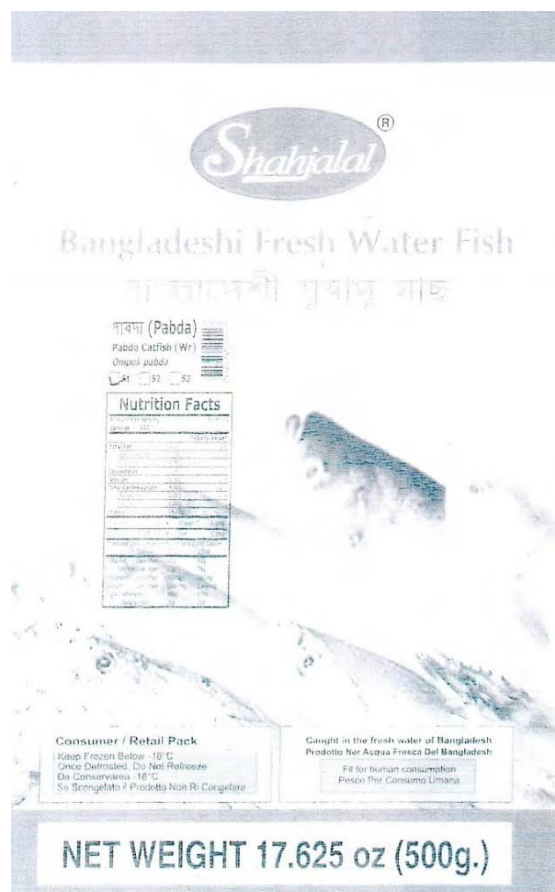
Shahjalal Bangladeshi Fresh Water Fish (Gulsha) Gangetic mystus (Cln) Mystus cavasius



Shahjalal Bangladeshi Fresh Water Fish (Kajoli) Catfish (Cln) Ailia coila



- Shahjalal Bangladeshi Fresh Water Fish (Pabda) Pabda Catfish (Wr) Ompek Pabda
- Shahjalal Bangladeshi Fresh Water Fish (Pabda) Pabda Catfish (Cln) Ompek Pabda



Shahjalal Bangladeshi Fresh Water Fish (Shing) Stringing Catfish (CIn) Heteropneustes fossilis



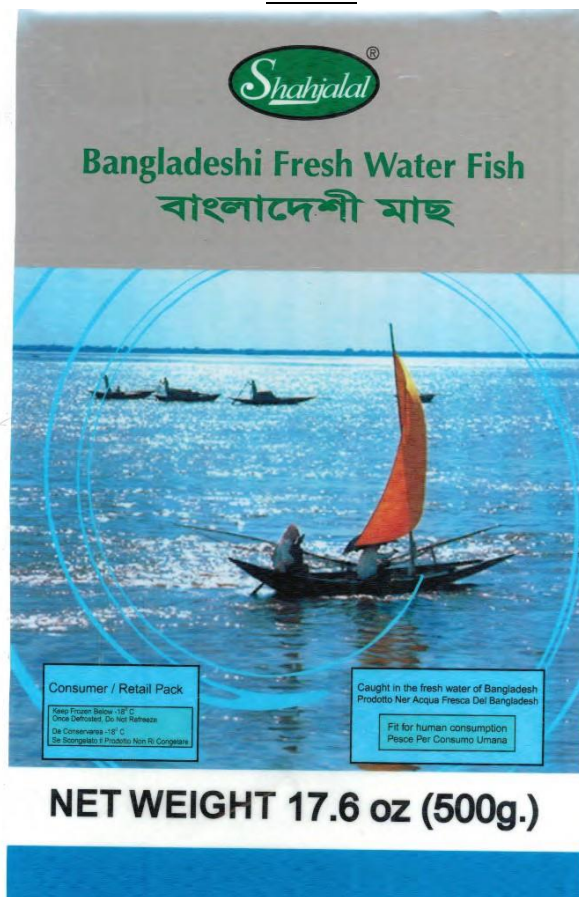
Shahjalal Bangladeshi Fresh Water Fish (Magur) Philippine catfish (CIn) Clarias batrachus



Recall 080-2019

Shahjala Bangladeshi Fresh
Water Fish Boal (Wallago
attu)

FRONT:



BACK:



Recall 080-2019

Shahjalal Bangladeshi Fresh Water Fish (Batashi) Indian Potasi (Cln) Neotropius athermoides

