



Laboratory Guidebook Notice of Change

Chapter new, **revised**, or archived: MLG 5B Appendix 4.03

Title: Flow Chart Specific for FSIS Laboratory non-O157 Shiga Toxin-Producing *Escherichia coli* (STEC) Analysis

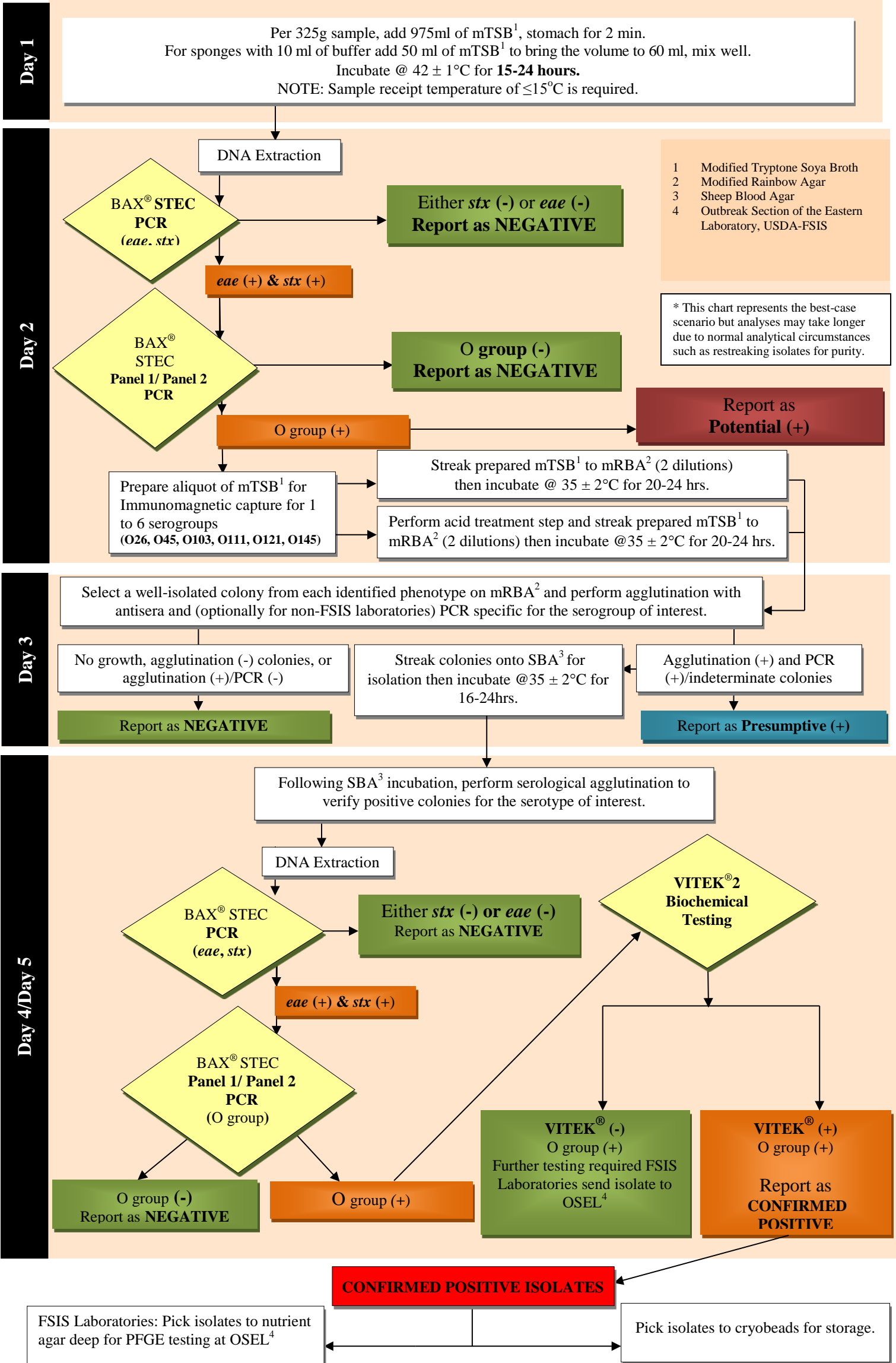
Effective Date: 06/29/14

Description and purpose of change(s):

This flow chart was issued in association with MLG 5B.05 Detection and Isolation of non-O157 Shiga Toxin-Producing *Escherichia coli* (STEC) from Meat Products and Carcass and Environmental Sponges.

The methods described in this guidebook are for use by the FSIS laboratories. FSIS does not specifically endorse any of the mentioned test products and acknowledges that equivalent products may be available for laboratory use. Method validation is necessary to demonstrate the equivalence of alternative tests as detailed in the document titled “FSIS Guidance for Evaluating Test Kit Performance” available on the FSIS website.

Flow Chart Specific for FSIS Laboratory non-O157 Shiga Toxin-Producing *Escherichia coli* (STEC) Analysis



1 Modified Tryptone Soya Broth
2 Modified Rainbow Agar
3 Sheep Blood Agar
4 Outbreak Section of the Eastern Laboratory, USDA-FSIS

* This chart represents the best-case scenario but analyses may take longer due to normal analytical circumstances such as restreaking isolates for purity.