



P.F. CHANG'S
HOME MENU

Meal for Two

GRILLED CHICKEN TERIYAKI
with LO MEIN NOODLES

P.F. CHANG'S
HOME MENU

part

P.F. CHANG'S®
HOME MENU



Meal for Two

MONGOLIAN STYLE BEEF

Beef with a sweet and savory sauce,
onions, string beans and
red bell peppers

PREPARED **MICROWAVE**

NET WT 2.0 LB (908g)



1 CODE = 1 MEAL

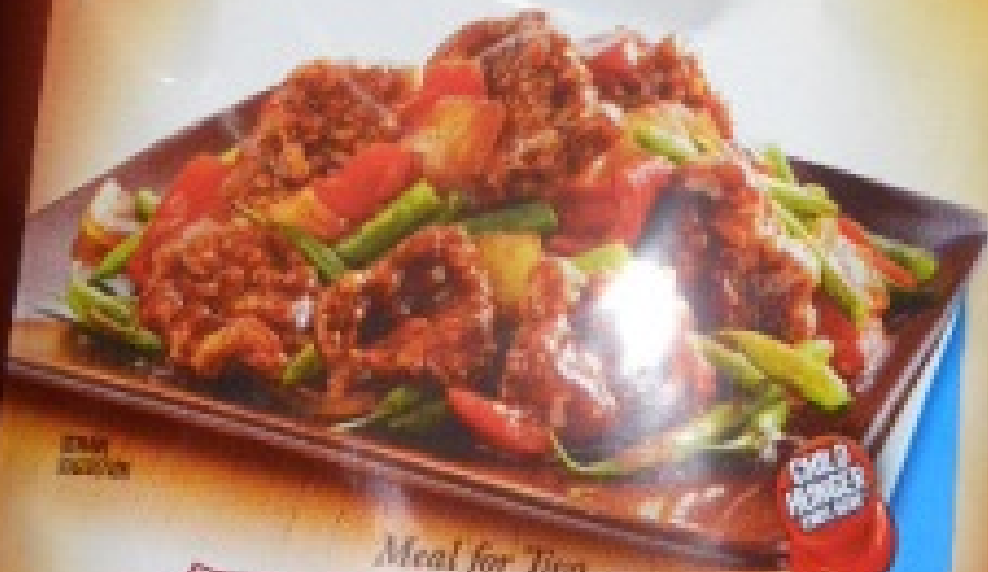
FEEDING AMERICA

SEE BACK OF BAG FOR MORE DETAILS

P.F. CHANG'S
HOME MENU

part

P.F. CHANG'S®
HOME MENU



Meal for Two

MONGOLIAN STYLE BEEF

Beef with a sweet and savory sauce,
onions, string beans and
red bell peppers

PREPARED QUICKLY

RESTAURANT QUALITY

COULD POWER THE CAR

1 CODE
= 1 MEAL

FEEDING AMERICA

Get back to work and school
faster with P.F.

HOME MENU

re

15 min

10 min

10 min

10 min

10 min

10 min

10 min

10 min



P.F. CHANG'S®

HOME MENU



10 min

Meal for Two

GARLIC CHICKEN WITH DAN DAN NOODLES

White meat chicken with a spicy sesame sauce, yakiwaka noodles, bell peppers and hot chili

Conv
& Fo
Food

8000 8167 0012 P:115
 BEST BY 08-10-2017
 3:15 SOUTH

Nutrition Facts

Serving Size 1/2 package (312g)
 Servings Per Container 2

Amount Per Serving		
Calories	330	Calories from Fat 60
		% Daily Value*
Total Fat	6g	9%
Saturated Fat	1g	5%
Trans Fat	0g	
Cholesterol	35mg	12%
Sodium	650mg	44%
Potassium	460mg	13%
Total Carbohydrate	45g	16%
Dietary Fiber	6g	24%
Sugars	15g	
Protein	22g	

Vitamin A 15% • Vitamin C 40%
 Calcium 4% • Iron 15%

* Percent Daily Values are based on a diet of other people's secrets.
 † Your daily values may be higher or lower depending on your calorie needs:
 Calories: 2,000 2,500

Total Fat	Less than	6g	8g
Sat Fat	Less than	2g	3g
Cholesterol	Less than	30mg	30mg
Sodium	Less than	2,400mg	2,400mg
Total Carbohydrate		350g	375g
Dietary Fiber		25g	30g

INGREDIENTS: COOKED CORN MEAL, BUCKLETS (WATER, ENRICHED WHEAT FLOUR (BLEACHED AND UNENRICHED), WHEAT FLOUR, NATURE IDENTIFIED BROWN, THIAMIN MONONITRATE, MONOFLAVIN, FOLIC ACID), SOYBEAN OIL, TURMERIC AND ANNATTO (COLORS), POTASSIUM CARBONATE, SODIUM CARBONATE, TERMI, CHICKEN BREAST WITH NO MEAT, CHICKEN BREAST WITH NO MEAT, WATER, SEASONING SOY SAUCE (SOYBEANS, SALT, WHEAT, MALTOSE DEXTRIN, SALT, FLAVOR, DEXTROSE, ISOLATED SOY PROTEIN, WATER, PINEAPPLE JUICE), SOY SAUCE (WATER, WHEAT, SOYBEANS, SALT, ALCOHOL, VINEGAR, POTASSIUM PHOSPHATE, LESS THAN 1% OF: HONEY, SUGAR, WATER, MSG), WATER, SOYBEANS, NOY, SALT, MONOFLAVIN, SOY SAUCE (WATER, WHEAT, SOYBEANS, SALT, GARLIC, CARAMEL COLOR, MODIFIED CORN STARCH, FERMENTED WHEAT PROTEIN, VINEGAR, SALT, SPICES, XANTHAN GUM, DEXTRIN), SUGAR, PINEAPPLE JUICE CONCENTRATE, CARAMEL DATE SAUCE (WATER, ICE, SUGAR, ASPERGILLUS ORYZA, SALT, CINNAMON, GARLIC CONCENTRATE, CHICKEN BROTH CONCENTRATE, LEMON JUICE CONCENTRATE, SESAME SEED OIL, HYDROLYZED FLAVOR, SALT, SOYBEANS, WHEAT FLOUR, SOYBEAN OIL, CARAMEL COLOR, ETHIC ACID, COGNAC VINEGAR, WATER, SALT, LACTIC ACID, MODIFIED CORN STARCH, SESAME OIL, SODIUM BIPHOSPHATE).
 CONTAINS SOY, WHEAT.

5005 6158 0012 ES 100
BEST BY 08-01-2017
11:03 NORTH

Nutrition Facts

Serving Size: 1/2 package (312g)
Servings Per Container: 2

Amount Per Serving	
Calories 360	Calories from Fat 110
% Daily Value*	
Total Fat 13g	18%
Saturated Fat 2g	10%
Trans Fat 0g	
Cholesterol 45mg	
Sodium 1150mg	15%

INGREDIENTS: COOKED BEEF, WATER AND FOOD STARCH PRODUCT (BEEF, WATER, VEGETABLE OIL, CORN STARCH, LESS THAN 2% OF: SAUCE WINE [WINE, SALT], SOY SAUCE [WATER, WHEAT, SOYBEANS, SALT], POTATO STARCH, SUGAR, SALT, SODIUM PHOSPHATES, NATURAL FLAVORS, ONIONS, GREEN BEANS, WATER, RED BELL PEPPERS, WATER, RED BELL PEPPERS, SOY SAUCE, SALT, WHEAT, SOYBEANS, SALT, ALCOHOL, SOYBEANS, SALT, ALCOHOL, SOYBEANS

5006 6152 0008 P-115
BEST BY MAY 26 2017
13:24

rition Facts

INGREDIENTS: BATTERED
WHITE MEAT CHICKEN (CHICKEN



P.F. CHANG'S®

HOME MENU



Meal for Two

BEEF with BROCCOLI

Beef with a savory garlic soy sauce and broccoli

KEEP FROZEN COOK THOROUGHLY

1 CAN = 1 MEAL

FEEDING AMERICA

P.F. CHANG'S®
HOME MENU



Meal for Two

GENERAL CHANG'S CHICKEN

Battered white meat chicken with a sweet chili sauce, broccoli and red bell peppers

P.F. CHANG'S®

HOME MENU



100%
SAUCE

Meal for Two

SWEET & SOUR CHICKEN

*Battered white meat chicken with
a balanced sweet and tangy sauce,
pineapple and bell peppers*

1 COKE
=
1 MEAL

5006 6161 0012 EST-233

BEST BY 06-04-2017

02:18 NORTH

rition Facts

Size 1/2 package (312g)

s Per Container 2

er Serving

350 Calories from Fat 150

INGREDIENTS: BROCCOLI,
COOKED BEEF, WATER AND
FOOD STARCH PRODUCT
(BEEF, WATER, VEGETABLE
OIL, CORN STARCH), LESS
THAN 2% OF: SAKE WINE
[WINE, SALT], SOY SAUCE
[WATER, WHEAT,
SOYBEANS, SALT], POTATO

5006 6160 0008 P-115

BEST BY JUN/03/2017

04 56

Nutrition Facts

Serving Size 1/2 package (312g)

Servings Per Container 2

Amount Per Serving

Calories 360 Calories from Fat 120

% Daily Value*

Total Fat 13g 20%

Saturated Fat 2.5g 13%

Total Fat 13g

INGREDIENTS: VEGETABLES (BROCCOLI, RED BELL PEPPERS), SWEET CHILI SAUCE (WATER, SUGAR, SOY SAUCE (WATER, WHEAT, SOYBEANS, SALT, ALCOHOL, VINEGAR), CONCENTRATED CHICKEN BROTH, GARLIC, CANOLA OIL), CORN STARCH, GINGER, LESS THAN 2% OF: CHILI PASTE (AND CHILI PEPPERS, DISTILLED VINEGAR, SALT, XANTHAN GUM), HYDROGENATED PALM OIL, OYSTER FLAVORED SAUCE (WATER, SUGAR, SALT, OYSTER EXTRACT), OYSTER WATER

5006 6160 0012 P-115

BEST BY 06-03-2017

05:09 NORTH

Nutrition Facts

Serving Size 1/2 package (312g)

Servings Per Container 2

INGREDIENTS: VEGETABLES AND FRUIT (PINEAPPLE, ONIONS, GREEN BELL PEPPERS, RED BELL PEPPERS), SWEET AND TANGY SAUCE (WATER, KETCHUP [TOMATO CONCENTRATE, DISTILLED VINEGAR, SALT, SUGAR, AND SPICES]),