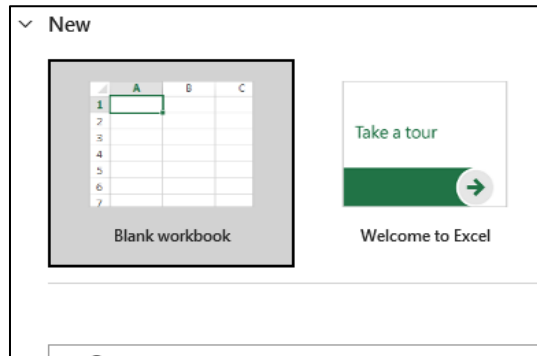
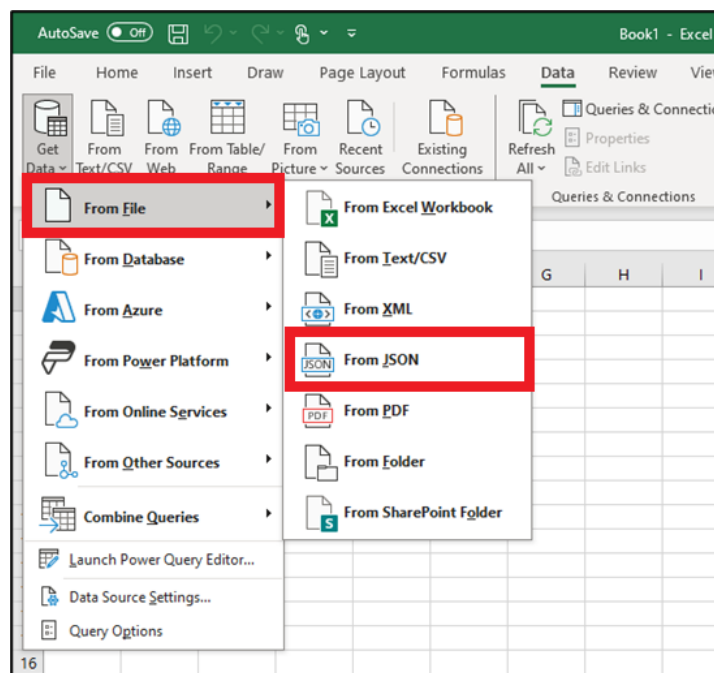
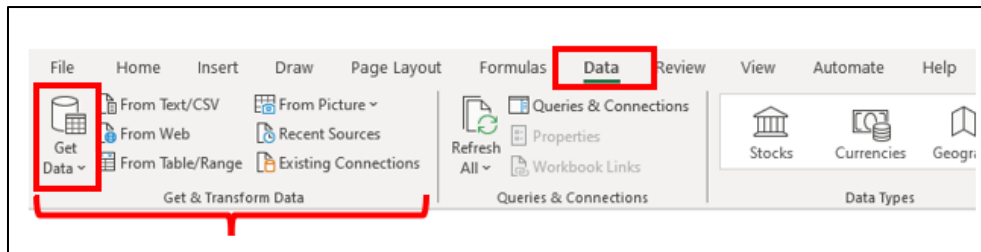


How to Open FSIS Public Use JSON Data Products in Microsoft Excel - Metadata Documentation

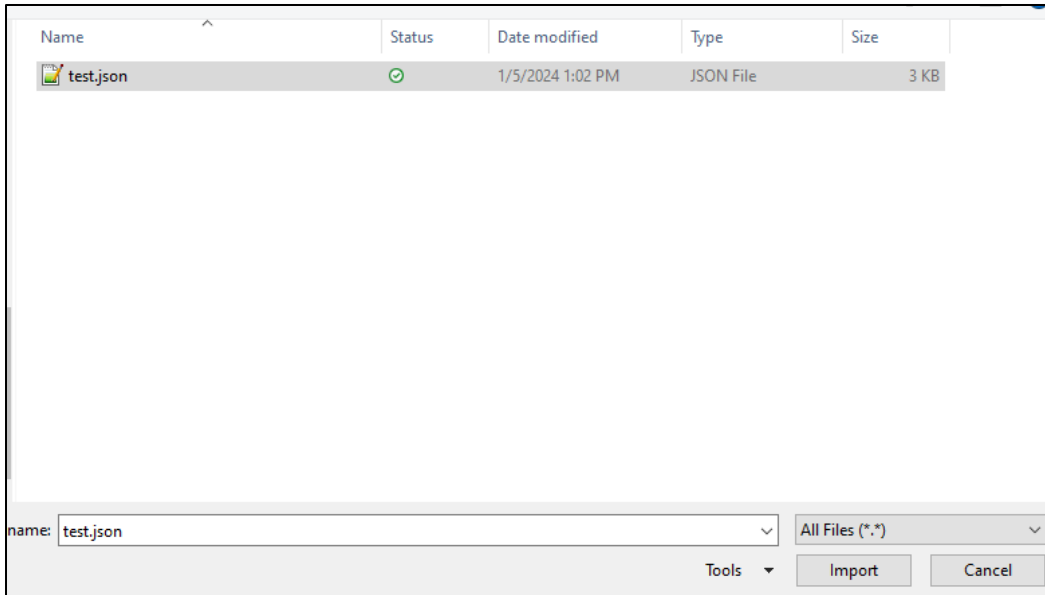
1. Download the JavaScript Object Notation (JSON) file from the FSIS Website.
2. Open a new blank workbook within Microsoft Excel.



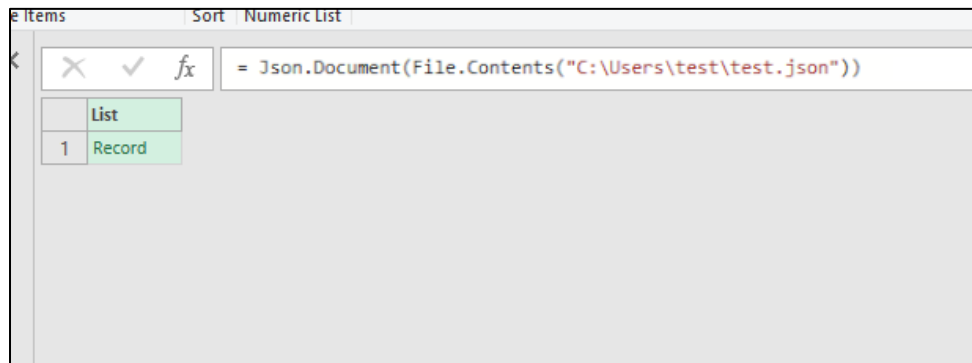
3. Go to the "Data" tab in the ribbon, then under "Get & Transform Data", go to "Get Data" > "From File" > "From JSON".



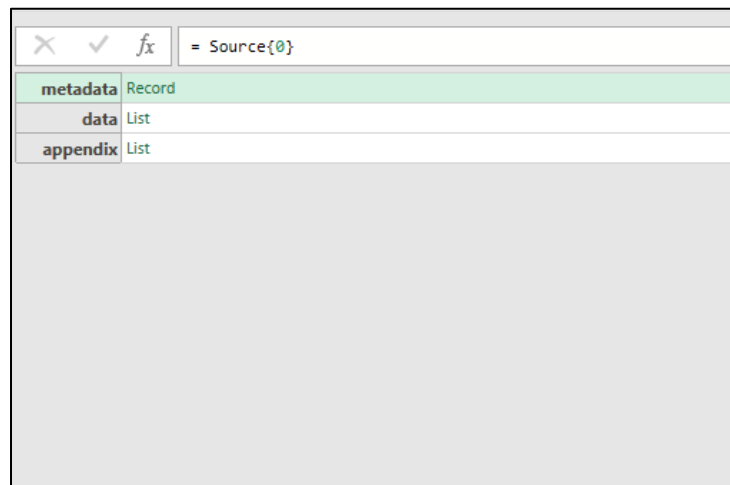
4. Navigate to the file on your personal computer, and then select “Import”.



5. This will open the Power Query Editor, in row 1 select “Record”.



6. In the metadata row, select “Record”.



7. Data Documentation can be expanded further by selecting “List” or “Record” in rows that have that option.

field	value
dataset_name	Student Grades Dataset
description	A contrived dataset containing student information and grades.
source	Totally Fake Educational Research
creation_date	2023-10-17
author	Researcher123
license	CC BY 4.0
variables	List
mics	List
data_format	JSON
data_records	3

8. After selecting “List” or “Record”, go to the “Transform” tab under “List Tools”, and under “Convert”, select “To Table”.

Power Query Editor - List Tools - Transform

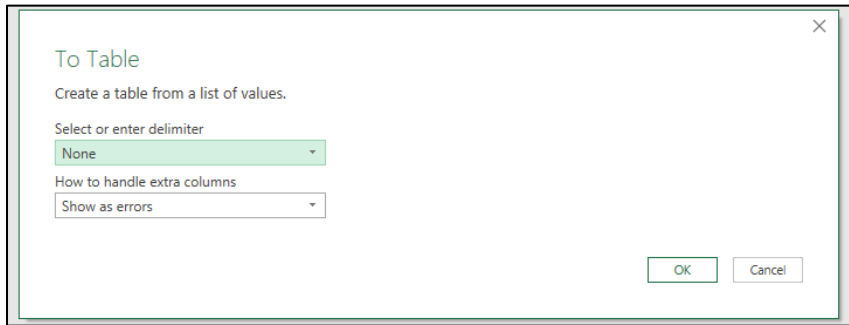
Convert: To Table, Keep Items, Remove Items

Manage Items: Remove Duplicates, Reverse Items

Sort: Statistics, Numeric List

	List
1	Record
2	Record
3	Record

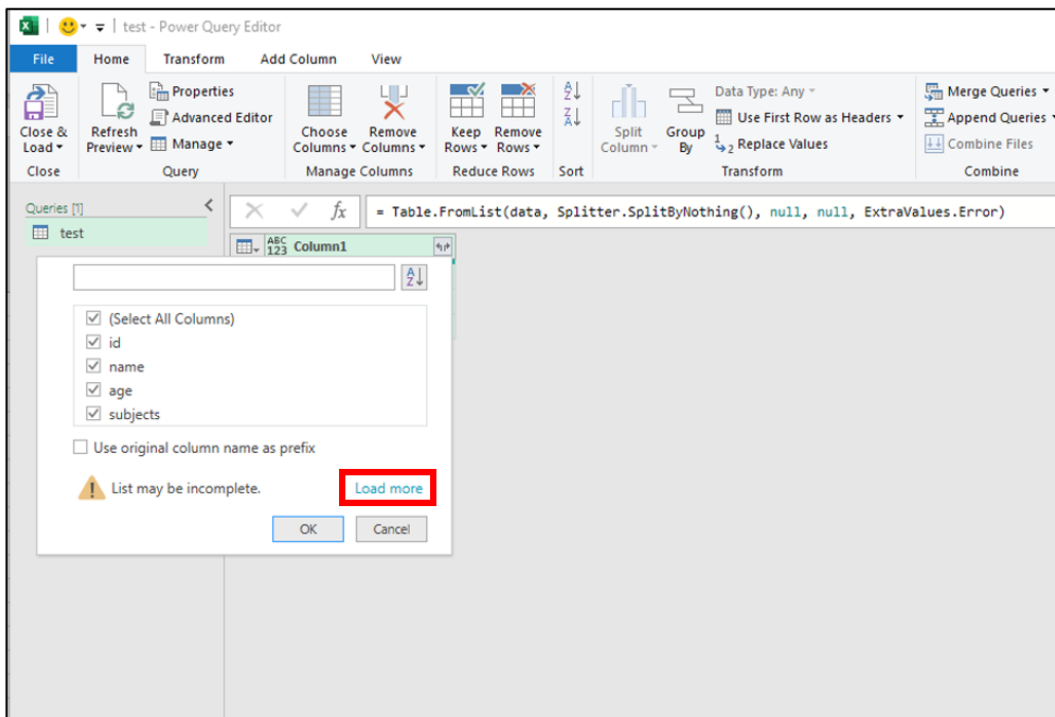
9. Ensure the “Select or enter delimiter” is set to “None”, and “How to handle extra columns” is set to “Show as errors”, as shown in the screenshot. Then select “OK”.



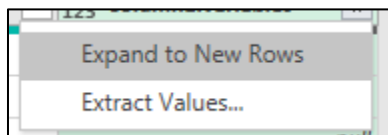
10. Within the table, select the two diverging arrows,



- a.
b. then **select “Load More”**, unselect “Use original column name as prefix”, and select “OK”.

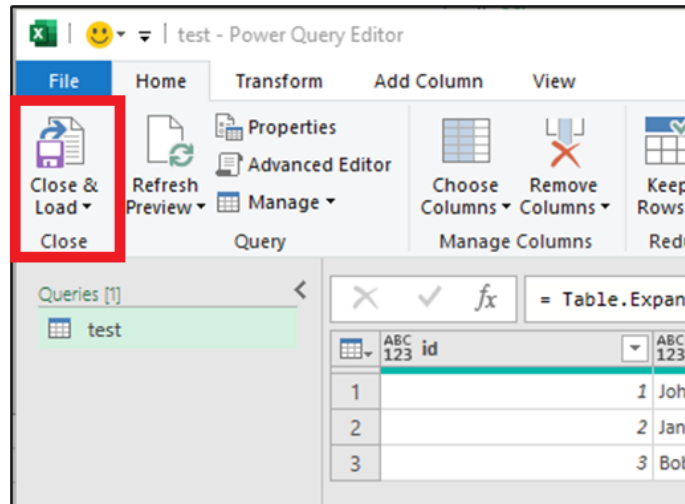


- c. In some datasets, users may need to “Expand to New Rows” to extract the data further when converting to a table form.



11. Repeat step 10 until all columns are expanded.

12. Then under the “Home” tab, under “Close”, select “Close & Load”.



13. Navigate to a new sheet within the Excel workbook and repeat steps 5-13 to retrieve other data tables.

