



## Laboratory Guidebook Notice of Change

Chapter new, **revised**, or archived: MLG 8 Appendix 1.05

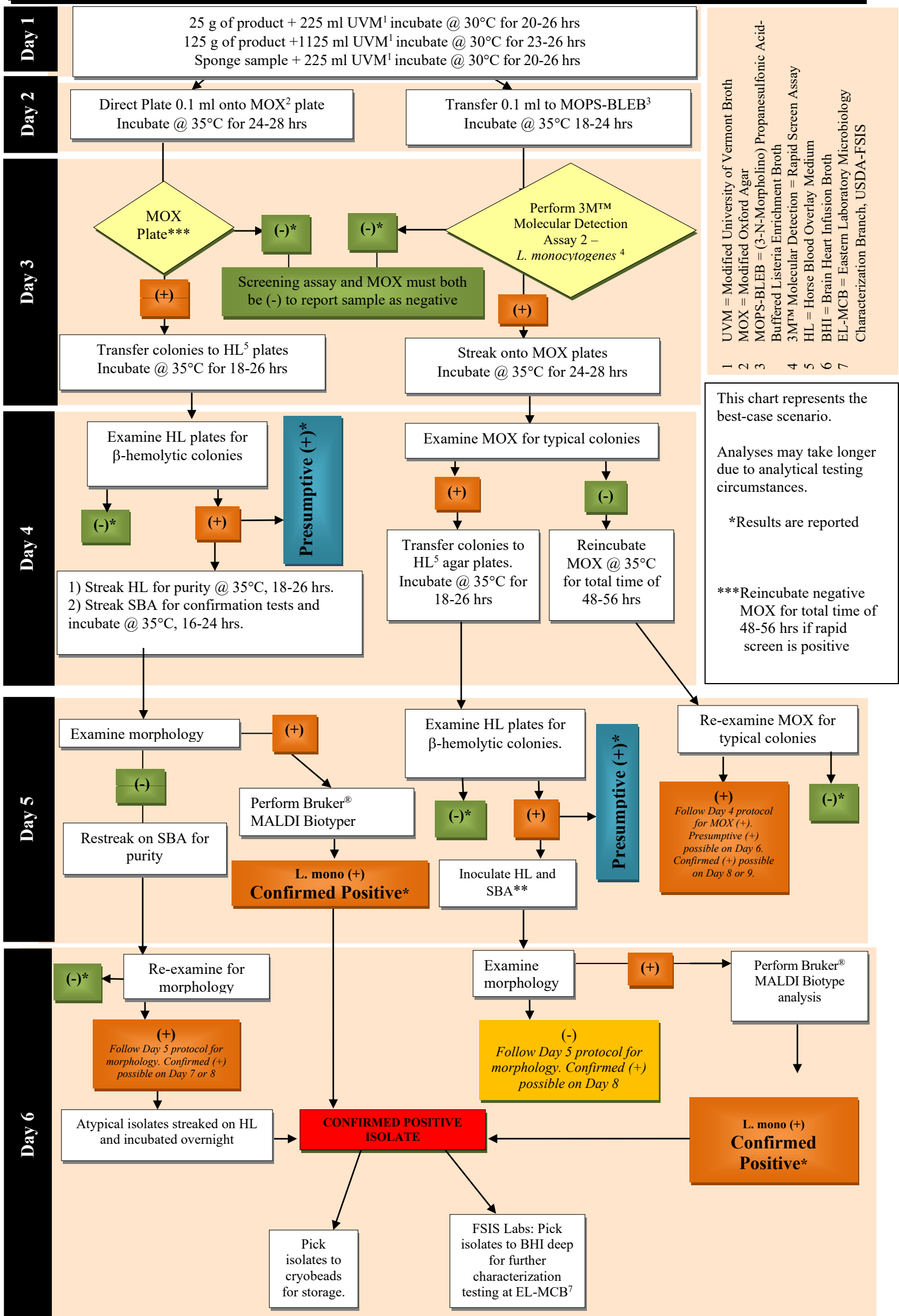
Titles: Flow Chart Specific for FSIS Laboratory Isolation and Identification of *Listeria monocytogenes*.

Isolation and Identification of *Listeria monocytogenes* (Culture Method only)

Effective Date: 08/16/21

Description and purpose of change(s): Replaced VITEK<sup>®</sup> 2 Compact system with Bruker<sup>®</sup> MALDI Biotyper. Removed use of Genprobe.

# Flow Chart Specific for FSIS Laboratory Isolation and Identification of *Listeria monocytogenes*.



- 1 UVM = Modified University of Vermont Broth
- 2 MOX = Modified Oxford Agar
- 3 MOPS-BLEB = (3-N-Morpholino) Propanesulfonic Acid-Buffered Listeria Enrichment Broth
- 4 3M<sup>TM</sup> Molecular Detection = Rapid Screen Assay
- 5 HL = Horse Blood Overlay Medium
- 6 BHI = Brain Heart Infusion Broth
- 7 EL-MCB = Eastern Laboratory Microbiology Characterization Branch, USDA-FSIS

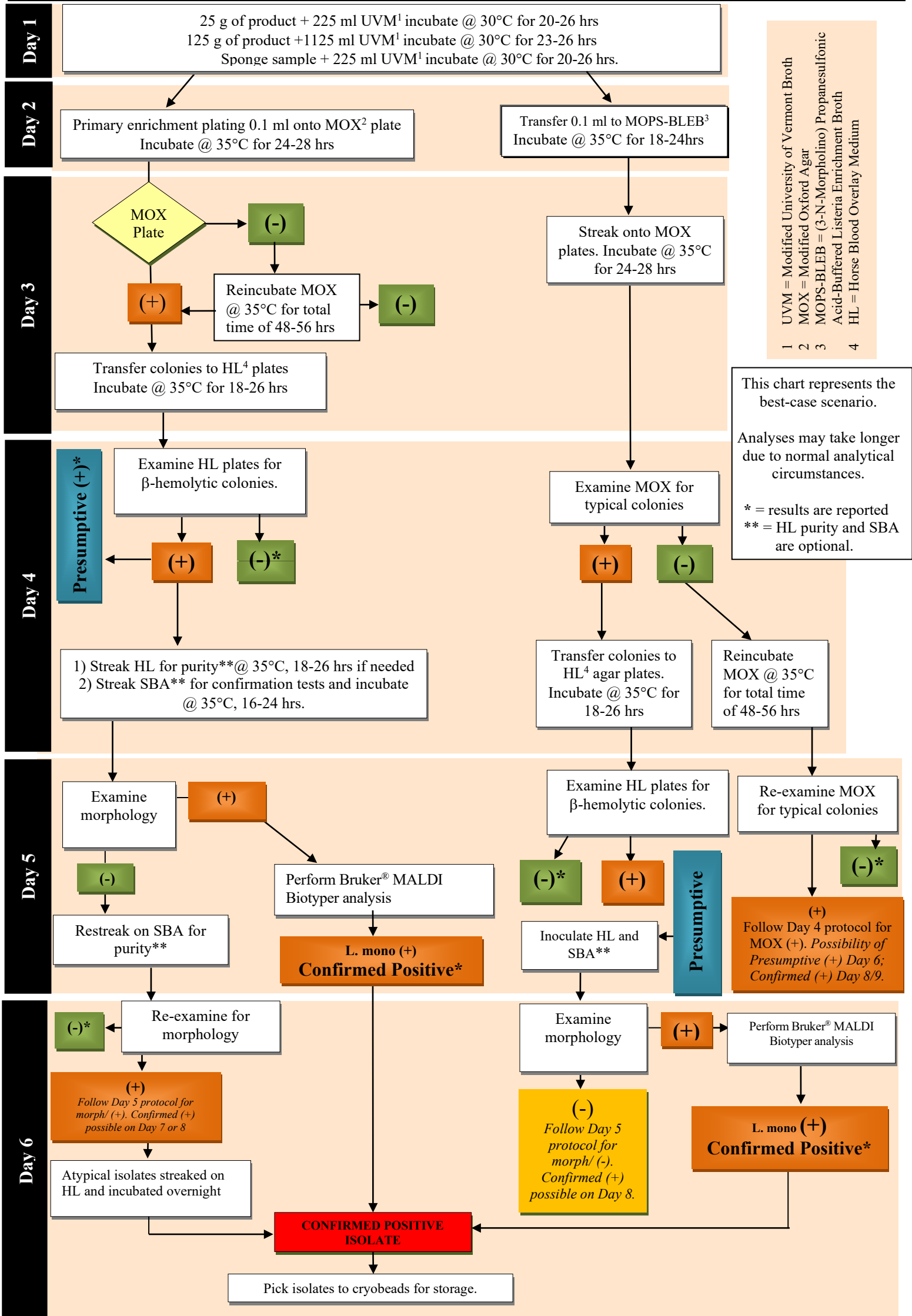
This chart represents the best-case scenario.

Analyses may take longer due to analytical testing circumstances.

\*Results are reported

\*\*\*Reincubate negative MOX for total time of 48-56 hrs if rapid screen is positive

# Isolation and Identification of *Listeria monocytogenes* (Culture Method only)



UVM = Modified University of Vermont Broth  
 MOX = Modified Oxford Agar  
 MOPS-BLEB = (3-N-Morpholino) Propanesulfonic Acid-Buffered Listeria Enrichment Broth  
 HL = Horse Blood Overlay Medium

1 2 3 4

This chart represents the best-case scenario. Analyses may take longer due to normal analytical circumstances.

\* = results are reported  
 \*\* = HL purity and SBA are optional.