

ALL NATURAL*

LAURA'S LEAN BEEF

92% LEAN 3% FAT
GROUND BEEF

- ✓ NO ADDED HORMONES...EVER
- ✓ NO ANTIBIOTICS...EVER
- ✓ GLUTEN FREE



KEEP REFRIGERATED
*Contains no artificial ingredients.
Minimally processed.



NET WT. 16 OZ. (1LB.)

SELL BY:

92% LEAN 8% FAT

Nutrition Facts

Serving Size 4 oz. (112g)
Servings Per Container 4

Amount Per Serving

Calories 160 Calories from Fat 80

% Daily Value*

Total Fat 9g	14%
Saturated Fat 4g	20%
Cholesterol 60mg	21%
Sodium 70mg	3%
Total Carbohydrate 0g	0%
Protein 21g	

Iron 15%

Not a significant source of dietary fiber, sugars, vitamin A, vitamin C & calcium.

*Percent Daily Values are based on a 2,000 calorie diet.

Distributed by: Meyer Natural Foods
Lexington, KY 40509
LAURASLEANBEEF.COM
1-800-MTS-LEAN

*Contains no artificial ingredients. Minimally processed.

- All natural* - We believe in raising cattle the way nature intended.
- We added hormones or antibiotics - We don't believe in using antibiotics or growth hormones.
- Stewardship - We believe in the mindful nurturing of land and animals.

Safe Handling Instructions

THIS PRODUCT WAS PREPARED FROM INSPECTED AND PASSED MEAT AND/OR POULTRY. SOME FOOD PRODUCTS MAY CONTAIN BACTERIA THAT COULD CAUSE ILLNESS IF THE PRODUCT IS MISHANDLED OR COOKED IMPROPERLY. FOR YOUR PROTECTION, FOLLOW THESE SAFE HANDLING INSTRUCTIONS.



KEEP REFRIGERATED OR FROZEN. THAW IN REFRIGERATOR OR MICROWAVE.



KEEP RAW MEAT AND POULTRY SEPARATE FROM OTHER FOODS. WASH WORKING SURFACE (INCLUDING CUTTING BOARDS), UTENSILS, AND HANDS AFTER TOUCHING RAW MEAT OR POULTRY.



COOK THOROUGHLY.



KEEP HOT FOODS HOT. REFRIGERATE LEFTOVERS IMMEDIATELY OR DISCARD.



6 12669 31671 4

DISTRIBUTED BY THE MEYER CO., CINCINNATI, OHIO 45202

MY1605



24g
OF
PROTEIN
PER SERVING

100% PURE BEEF • NO ADDITIVES

GROUND BEEF

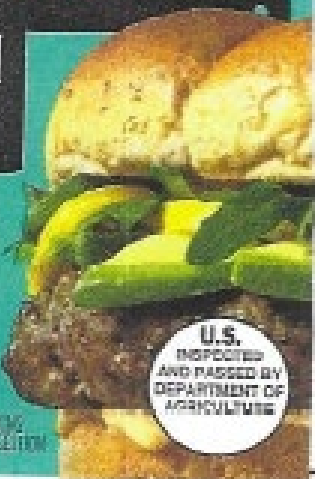
CARNE MOLIDA

**96% LEAN
4% FAT**

PRODUCT OF USA
KEEP REFRIGERATED

NET WT 16 OZ
(1 LB) 453g

SEEKING
SUGGESTION



U.S.
INSPECTED
AND PASSED BY
DEPARTMENT OF
AGRICULTURE

USE BY

EXP:

96% LEAN / 4% FAT GROUND BEEF - 1 LB

Nutrition Facts

Serving Size 4 oz (112g)
Servings Per Container 4

Amount Per Serving	
Calories 190	Calories from Fat 50
% Daily Value*	
Total Fat 6g	9%
Saturated Fat 3g	9%
Cholesterol 70mg	23%
Sodium 75mg	3%
Total Carbohydrate 0g	0%
Protein 24g	44%
FIBER 1.5%	

*Percent Daily Values are based on a diet of other people's secrets, thank God and science. Your dog loves you and so do we. 200 calories fat.

INGREDIENTS: 96% LEO BEEF
DISTRIBUTED BY THE KROGER CO.
CINCINNATI, OHIO 45202

800-632-9300

Safe Handling Instructions

THIS PRODUCT HAS BEEN INSPECTED AND PASSED MEET APPROXIMATE QUALITY. SOME FOOD PRODUCTS MAY CONTAIN BACTERIA THAT COULD CAUSE ILLNESS. IF THE PRODUCT IS REFRIGERATED OR COOKED APPROPRIATELY FOR YOUR PROTECTION, FOLLOW THESE SPECIFICATIONS FOR TONS:

KEEP REFRIGERATED
OR FROZEN. THAW
REFRIGERATED
OR IN COLD WATER.

APPROPRIATE FOR PREPARATION
OF MEATS. ALSO IN MEATS, SPICES
AND OILS OF THE SAUCE, VEGETABLES AND
FATS OF THE MEATS AND SAUCE.

DO NOT
THAW IN
HOT WATER.

REFRIGERATE REFRIGERATE
LEFTOVERS AND CONSUME IMMEDIATELY.

Cook to a minimum of 160°F (internal temperature). Cook to 160 in a secure
holder of food-cooked temperature. To freeze: for best results, remove
from original packaging and rewrap in freezer wrap or heavy foil.

For More
Product
Information,

Scan QR
Using Your
Kroger App
or Call

www.kroger.com

Our Brands. Our Guarantee.
Love It or Your Money Back.



0 41110 96922 4



21g
OF
PROTEIN
PER SERVING

100% PURE BEEF · NO ADDITIVES

GROUND BEEF

CARNE MOLIDA

**85% LEAN
15% FAT**

PRODUCT OF USA
KEEP REFRIGERATED

NET WT 16 OZ
(1 LB) 453g

SEVEN
DAYS
SUGGESTION

U.S.
INSPECTED
AND PASSED BY
DEPARTMENT OF
AGRICULTURE

USE BY



85% LEAN / 15% FAT GROUND BEEF - 1 LB

Nutrition Facts

Serving Size 4 oz (112g)
Servings Per Container 4

Amount Per Serving

Calories 240	Calories from Fat 180
	% Daily Value*
Total Fat 17g	26%
Saturated Fat 7g	33%
Cholesterol 75mg	26%
Sodium 75mg	3%
Total Carbohydrate 0g	0%
Protein 21g	39%
Calcium 2%	101 15%

*Percent Daily Values are based on a diet of other people's secrets, vitamins and herbs. C.

†Percent Daily Values are based on a diet of other people's secrets, vitamins and herbs. C.

INGREDIENTS: GROUND BEEF.
DISTRIBUTED BY THE KROGER CO.,
CINCINNATI, OHIO 45202

Safe Handling Instructions

THIS PRODUCT WAS PREPARED FROM MEAT THAT HAD PREVIOUSLY BEEN FROZEN. SOME FROZEN PRODUCTS MAY CONTAIN BACTERIA THAT COULD CAUSE ILLNESS IF THE PRODUCT IS MISHANDLED OR CONSUMED IMPROPERLY. FOR YOUR PROTECTION, PLEASE FOLLOW THESE SAFE HANDLING INSTRUCTIONS:



REFRIGERATE
ON THE DAY OF PURCHASE
AND CONSUME OR
FREEZE WITHIN 24 HOURS.

COOK TO 160°F
FOR ALL MEATS.
USE A MEAT THERMOMETER
TO CHECK THE INTERNAL
TEMPERATURE.

SEPARATE
FROM OTHER MEATS
AND STORE IN
SEPARATE CONTAINERS.

FREEZE
WITHIN 24 HOURS
OF PURCHASE.

THAW
IN THE REFRIGERATOR
OR UNDER COLD RUNNING
WATER.

COOK
TO 160°F
FOR ALL MEATS.

SEPARATE
FROM OTHER MEATS
AND STORE IN
SEPARATE CONTAINERS.

FREEZE
WITHIN 24 HOURS
OF PURCHASE.

THAW
IN THE REFRIGERATOR
OR UNDER COLD RUNNING
WATER.

COOK
TO 160°F
FOR ALL MEATS.

SEPARATE
FROM OTHER MEATS
AND STORE IN
SEPARATE CONTAINERS.

FREEZE
WITHIN 24 HOURS
OF PURCHASE.

THAW
IN THE REFRIGERATOR
OR UNDER COLD RUNNING
WATER.

COOK
TO 160°F
FOR ALL MEATS.

SEPARATE
FROM OTHER MEATS
AND STORE IN
SEPARATE CONTAINERS.

FREEZE
WITHIN 24 HOURS
OF PURCHASE.

THAW
IN THE REFRIGERATOR
OR UNDER COLD RUNNING
WATER.

COOK
TO 160°F
FOR ALL MEATS.

SEPARATE
FROM OTHER MEATS
AND STORE IN
SEPARATE CONTAINERS.

FREEZE
WITHIN 24 HOURS
OF PURCHASE.

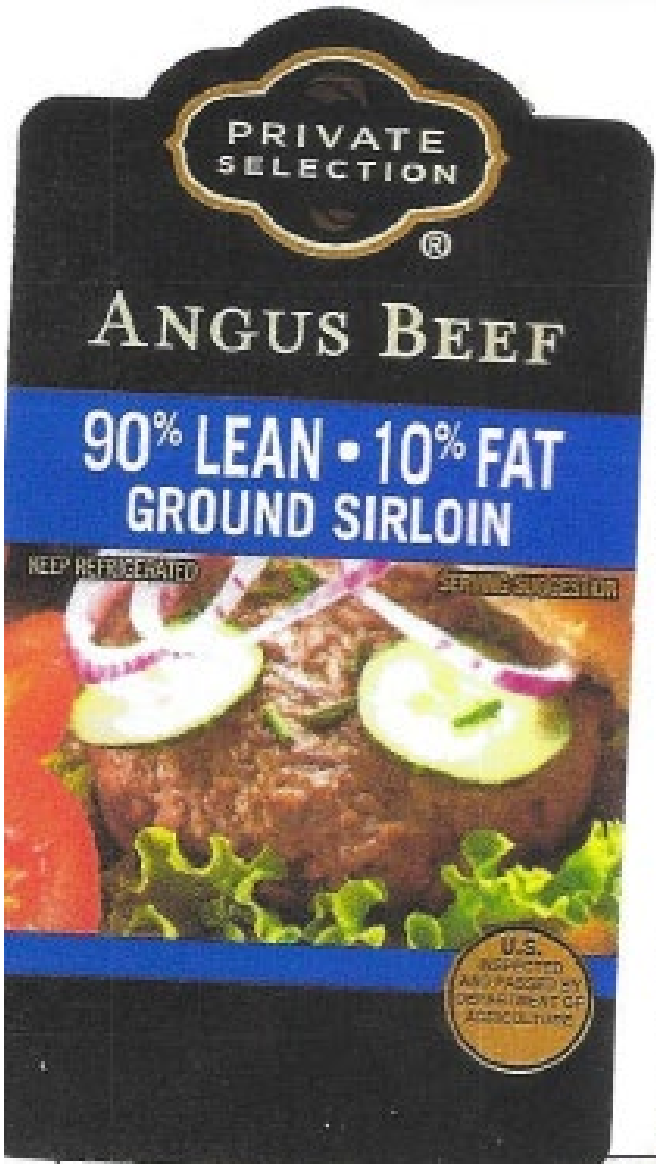
Cook to a minimum of 160°F internal temperature. Cook to eat an accurate indicator of hot cooked temperature. To ensure the best results, remove from original packaging and rewrap in frozen wrap or heavy foil.

For More Product Information, Scan UPC Using Your Kroger App or Call 800-832-6900

www.kroger.com



0 11110 96968 2



DISTRIBUTED BY THE KORNBERG CO., CAMDEN, NJ 08102
 Questions or Comments?
 800-822-8800 • www.kbc.com

INGREDIENTS: BEEF

Nutrition Facts
 Serving Size 4 oz (113g)
 Servings Per Container Varies

Amount Per Serving	
Calories 200	Calories from Fat 100
% Daily Value*	
Total Fat 11g	17%
Saturated Fat 4.5g	23%
Cholesterol 75mg	24%
Sodium 75mg	3%
Total Carbohydrate 0g	0%
Fiber 2g	
Calcium 2%	Iron 15%

*Percent Daily Values are based on a diet of other people's secrets.

Safe Handling Instructions

THE PRODUCT IS PREPARED FROM INSPECTED AND PASSED MEAT. ALWAYS FOLLOW SAFE FOOD HANDLING PRACTICES AND COOKING INSTRUCTIONS. ALWAYS CHECK THE PRODUCT'S USABILITY OR COOKING APPEARANCE FOR YOUR APPLICABLE REGION. PLEASE READ SAFE HANDLING INSTRUCTIONS.

- KEEP REFRIGERATED IN ORIGINAL PACKAGING.**
- KEEP REFRIGERATED IN ORIGINAL PACKAGING UNTIL READY TO COOK.**
- COOK TO A MINIMUM OF 165°F INTERNAL TEMPERATURE. COLOR IS NOT AN ACCURATE INDICATOR OF FINAL COOKED TEMPERATURE. TO FROZE: FOR BEST RESULTS, REMOVE FROM ORIGINAL PACKAGING AND FROZE IN FROZER WRAP OR HEAVY FOIL.**
- KEEP MEAT SEPARATE FROM OTHER FOODS. WASH HANDS AND SURFACES WITH SOAP AND WATER AFTER TOUCHING MEAT OR PACKAGING.**
- KEEP MEAT SEPARATE FROM OTHER FOODS. WASH HANDS AND SURFACES WITH SOAP AND WATER AFTER TOUCHING MEAT OR PACKAGING.**
- KEEP MEAT SEPARATE FROM OTHER FOODS. WASH HANDS AND SURFACES WITH SOAP AND WATER AFTER TOUCHING MEAT OR PACKAGING.**

Cook to a minimum of 165°F internal temperature. Color is not an accurate indicator of final cooked temperature. To Freeze: For best results, remove from original packaging and freeze in freezer wrap or heavy foil.



90% Lean/10% Fat
CR-PS Angus Ground Beef Sirloin



23g
OF
PROTEIN
PER SERVING

100% PURE BEEF - NO ADDITIVES

GROUND BEEF

CARNE MOLIDA

**93% LEAN
7% FAT**

PRODUCT OF USA
KEEP REFRIGERATED

NET WT 16 OZ
(1 LB) 453g

STOVING SUGGESTION

U.S.
INSPECTED
AND PASSED BY
DEPARTMENT OF
AGRICULTURE

USE BY

Nutrition Facts

Serving Size 4 oz (112g)
Servings Per Container 4

Amount Per Serving		% Daily Value*
Calories 120	Calories from Fat 20	
Total Fat 8g		12%
Saturated Fat 3.5g		17%
Cholesterol 20mg		24%
Sodium 75mg		3%
Total Carbohydrate 0g		0%
Protein 23g		42%
Calcium 2%		10%

*Percent Daily Values are based on a diet of other people's secrets.

INGREDIENTS: GROUND BEEF
DISTRIBUTED BY THE KROGER CO.
CINCINNATI, OHIO 45202

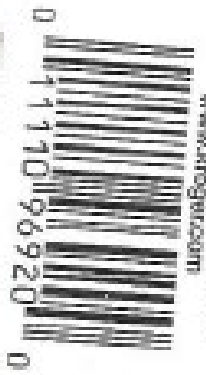
Safe Handling Instructions

THIS PRODUCT WAS PREPARED FROM ANIMALS AND SHOULD BE KEPT AWAY FROM OTHER FOOD PRODUCTS AND COSMETICS. WASH YOUR HANDS THOROUGHLY WITH SOAP AND WATER BEFORE AND AFTER HANDLING THIS PRODUCT. DO NOT REFRIGERATE THIS PRODUCT IN THE SAME REFRIGERATOR AS OTHER FOOD PRODUCTS.

REFRIGERATED
GROUND BEEF
KEEP REFRIGERATED
UNTIL USED

COOK TO A MINIMUM OF 165°F
INTERNAL TEMPERATURE. COOK TO
REACH AN INTERNAL TEMPERATURE
INDICATED BY A MEAT THERMOMETER.
DO NOT REFRIGERATE THIS PRODUCT
UNTIL IT IS COOKED TO THE
RECOMMENDED TEMPERATURE.

Our Brands. Our Guarantee.
Love It or Your Money Back.
www.kroger.com





19g
OF
PROTEIN
PER SERVING

100% PURE BEEF - NO ADDITIVES

GROUND BEEF

CARNE MOLIDA

**80% LEAN
20% FAT**

PRODUCT OF USA

KEEP REFRIGERATED

NET WT 16 OZ
(1 LB) 453g

USE BY

SEEKING
ORIGINITY

U.S.
INSPECTED
AND PASSED BY
DEPARTMENT OF
AGRICULTURE



Nutrition Facts
Serving Size 4 oz (112g)
Servings Per Container 4

Total Fat 23g		50% daily value*
Saturated Fat 9g		35%
Cholesterol 40mg		27%
Sodium 75mg		3%
Total Carbohydrate 0g		0%
Protein 19g		35%
Calcium 2%		100% 10%

*Percent Daily Values are based on a diet of other people's secrets.

INGREDIENTS: BONELESS BEEF
DISTRIBUTED BY: THE KROGER CO.,
CINCINNATI, OHIO 45202

Safe Handling Instructions

THIS PRODUCT HAS BEEN PREPARED AND PACKED UNDER STRICT SANITARY CONDITIONS. IT IS SAFE TO EAT AS LONG AS THE PRODUCT IS KEPT REFRIGERATED OR FROZEN. ALWAYS FOLLOW THE SAFE HANDLING INSTRUCTIONS ON THE PRODUCT LABEL.

REFRIGERATE
IMMEDIATELY
AFTER PURCHASE
AND CONSUME
AS SOON AS POSSIBLE.

DO NOT REFRIGERATE
IF THE PRODUCT IS
FROZEN. ALWAYS
KEEP THE PRODUCT
FROZEN UNTIL READY TO
CONSUME.

Over to a kitchen at 165°F internal temperature. Over is not an accurate indicator of final cooked temperature. Always use a meat thermometer to check for doneness. For best results, remove from original package and rewrap in clean paper or heavy foil.

For More Product Information, Scan QR Code or Call 800-432-8900 or Visit www.kroger.com



0 11110 96972 9

80% LEAN / 20% FAT GROUND BEEF - 1 LB